

Kalmar DRG700-75ZXS
Lifting data
DRG700-75ZXS

Lifting capacity at load centre L4-L5-L6-L7-L8-L9, rated (tons)	70 - 60 - 45 - 30 - 22
Lifting capacity at load centre L4-L5-L6-L7-L8-L9, rated with jacks (tons)	70 - 60 - 50 - 39 - 28
Lifting speed L4, unloaded – at 70% of rated load (m/s)	0,42 - 0,22
Lowering speed L4, unloaded – at rated load (m/s)	0,20 - 0,36

Driving data

Travelling speed forward, unloaded – at rated load (km/h)	26 - 5
Travelling speed backward, unloaded – at rated load (km/h)	17 - 5
Gradeability at 2 km/h, unloaded – at rated load (%)	32 - 19
Gradeability max., unloaded – at rated load (%)	30 - 16
Drawbar pull, max. (kN)	316

Weight of trucks

Service weight (kg)	75000
Axle load front at load centre L4, unloaded – at rated load (kg)	31600 - 124300
Axle load front at load centre L5, unloaded – at rated load (kg)	-
Axle load front at driving position according to EN 1459, and rated load (kg)	-
Axle load rear at load centre L4, unloaded – at rated load (kg)	43400 - 20700
Axle load rear at load centre L5, unloaded – at rated load (kg)	-
Axle load rear at driving position according to EN 1459, and rated load (kg)	-

Engine

Manufacturer / model	Volvo / TAD-1151-VE
Fuel / type of engine	Diesel / 4 stroke
Emission stage / approval	EU Stage III / EPA Tier 3
Number of cylinders / displacement (l)	6 / 10,84
Power rated @ revs, ISO 3046 (kW / rpm)	265 / 1450-2100
Torque max @ revs, ISO 3046 (Nm / rpm)	1780 / 1000-1500
Alternator, type - power (W)	AC - 4200
Starting battery, voltage - capacity (V – Ah)	2×12 - 145
Fuel consumption, normal driving (l/h)	14-20

Transmission

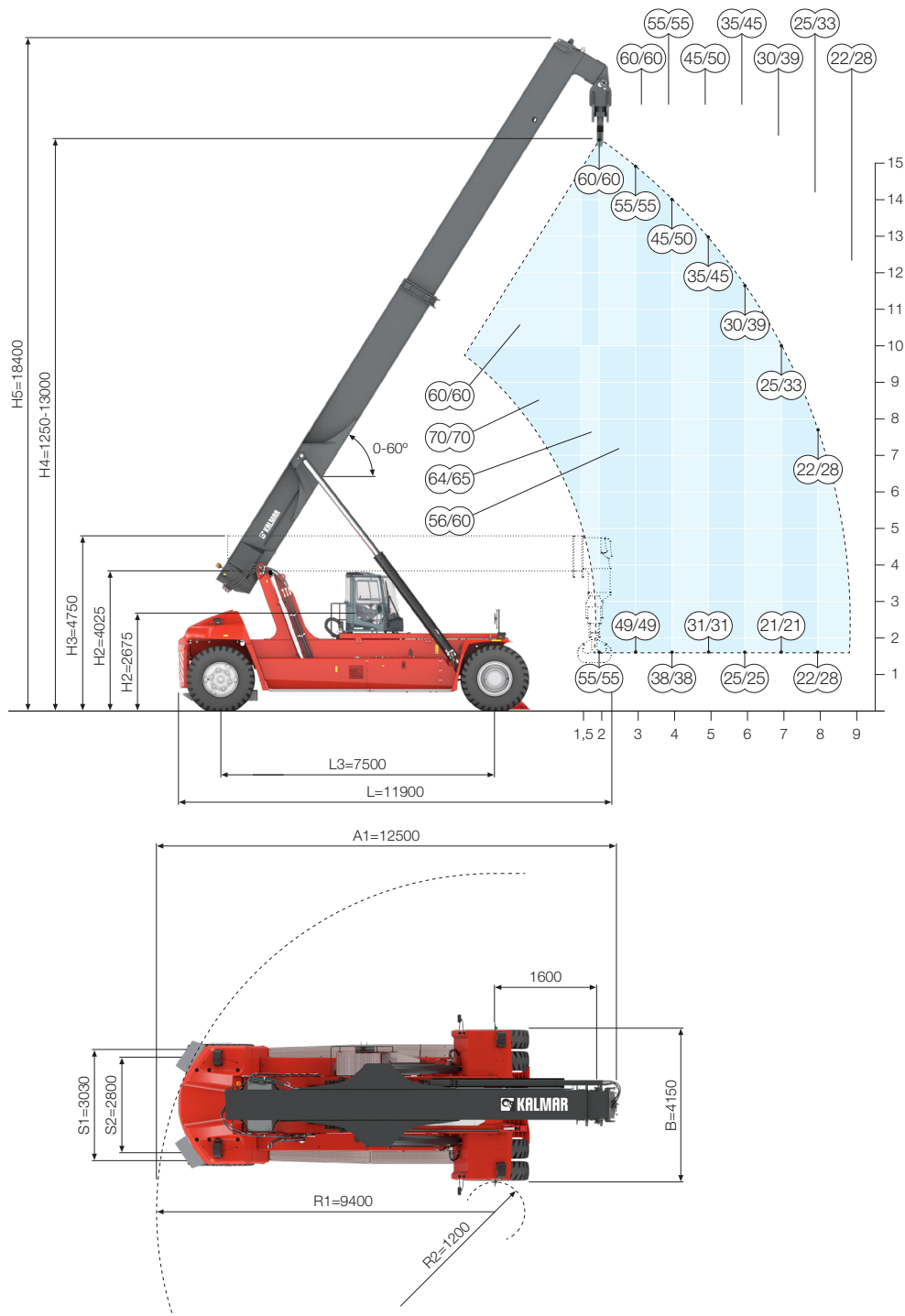
Manufacturer / model	ZF / 5WG-261
Clutch, type	Torque converter
Gearbox, type	Automatic Powershift
Number of gears, forward - reverse	5 - 3
Driving axle, manufacturer / type	Kessler D102 / Differential and hub reduction

Wheels

Tyre, type	Tubeless
Dimensions, front – rear (inch)	18.00x33 – 18.00x33, PR40 E4
Number of wheels, front – rear (*driven)	4* - 2
Pressure (MPa)	1,0

Miscellaneous

Steering system, type – maneuvering	Service assisted - Steering wheel
Service brake system, type – affected wheels	Wet disc brakes - Drive wheel
Parking brake system, type – affected wheels	Spring brake - Drive wheel
Noise level EN12053 with ECO modes - equivalent inside cabin LpAZ (dB(A))	69-71
Noise level EN12053 with ECO-modes - equivalent outside cabin LwAZ (dB(A))	107-110
Max. hydraulic pressure (MPa) boom / spreader	23,0
Fuel volume (l)	550
Hydraulic oil volume (l)	740 (600 + 140)
Overload protection	Electronic



Dimensions

DRG700-75ZXS

Boom angle (°)	α	0-58
Boom stroke / outreach (mm)		7000
Track (c-c), front – rear	S	3030 - 2800
Ground clearance, min. (mm)		300

The designs and materials specification are subject to alternation without prior notice.
Tolerances according to K-standard 95430.0008/0009.

Kalmar offers the widest range of cargo handling solutions and services to ports, terminals, distribution centres and to heavy industry. Kalmar is the industry forerunner in terminal automation and in energy efficient container handling, with one in four container movements around the globe being handled by a Kalmar solution. Through its extensive product portfolio, global service network and ability to enable a seamless integration of different terminal processes, Kalmar improves the efficiency of every move. www.kalmarglobal.com

Kalmar is part of Cargotec. Cargotec's sales in 2018 totalled approximately EUR 3.3 billion and it employs around 12.000 people. www.cargotec.com



Cargotec Sweden AB
Movägen 1
SE-341 32, Ljungby, Sweden
tel. +46 372 260 00
www.kalmarglobal.com